

MANI®

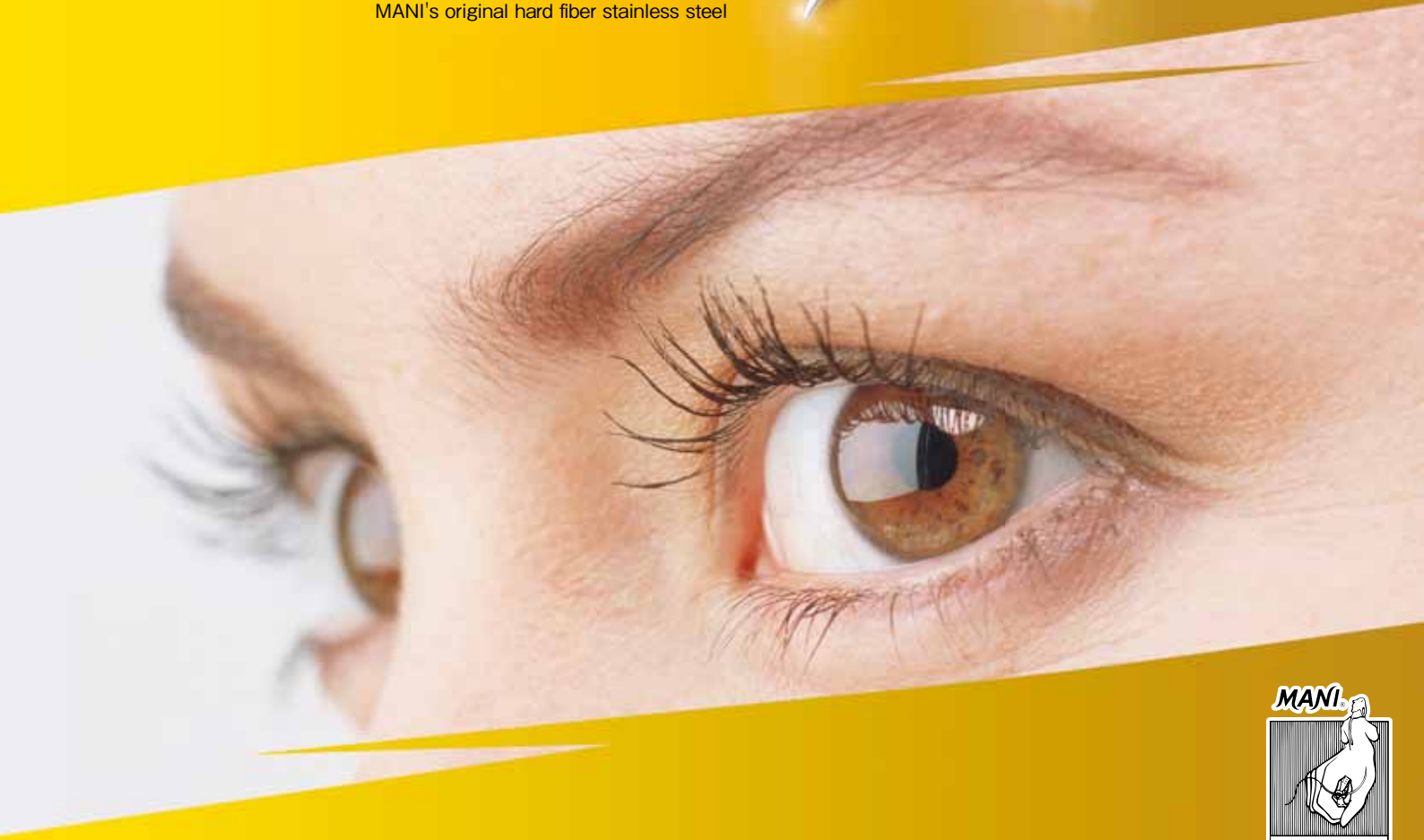


Ophthalmic Knife

Crosslapped Edge

Crosslapped edge provides better sharpness

The material is strong and break-resistant
MANI's original hard fiber stainless steel

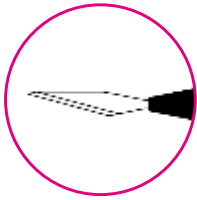




MANI® Ophthalmic Knife

Straight Knife

6pcs/box



MST



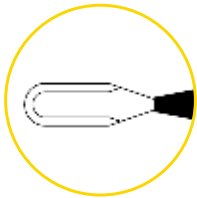
actual size

Product Name	ORDER#
Straight 15.0°	MST 15
Straight 22.5°	MST 22
Straight 30.0°	MST 30
Straight 45.0°	MST 45

Crescent Knife

Angle = 60°

6pcs/box



MCU·MCD·MCS
MCB



actual size

Product Name (Blade Width)	ORDER#
Crescent Bevel Up (2.3mm)	MCU 26
Crescent Bevel Up (2.0mm)	MCU 20
Crescent Bevel Down (2.3mm)	MCD 26
Crescent Straight (2.3mm)	MCS 26

Mini Crescent Knife

Angle = 25°

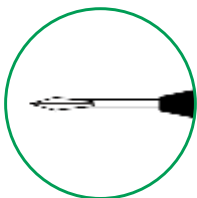
6pcs/box

Product Name (Blade Width)	ORDER#
Crescent Duple Bevel (1.25mm)	MCB 12

MVR Knife

Angle = 45°

6pcs/box



MVR·MPK



actual size

- ※ 1. MVR25 can go inside 23G infusion cannula and be used for membrane peeling.
- ※ 2. MPK25 can go inside 25G infusion cannula and be used for membrane peeling.

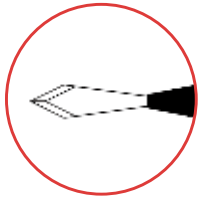
Product Name (Blade Width)	ORDER#
MVR-Lance 19G (1.5mm)	MVR 19
MVR-Lance 20G (1.2mm)	MVR 20
MVR-Lance 23G (0.9mm)	MVR 23
MVR-Lance 24G (0.8mm)	MVR 24
MVR-Lance 25G*1 (0.55mm)	MVR 25
MVR-Angled 19G (1.5mm)	MVR 19A
MVR-Angled 20G (1.2mm)	MVR 20A
MVR-Angled 21G (1.1mm)	MVR 21A
MVR-Angled 23G (0.9mm)	MVR 23A
MVR-Angled 24G (0.8mm)	MVR 24A
MVR-Angled 23G (0.7mm)	MVR 23AD
Port Knife 25G*2 (0.45mm)	MPK 25

The crosslapped edge made of MANI's original hard fiber stainless steel produces the ultimate in sharpness.

Slit Knife

Angle = 45°

6pcs/box



MSL·MSS



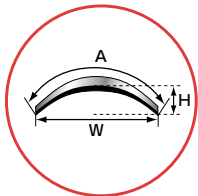
actual size

Product Name	ORDER#
Slit Angled 1.0mm	MSL10
Slit Angled 1.1mm	MSL11
Slit Angled 1.2mm	MSL12
Slit Angled 1.3mm	MSL13
Slit Angled 1.4mm	MSL14
Slit Angled 1.6mm	MSL16
Slit Angled 1.8mm	MSL18
Slit Angled 1.9mm	MSL19
Slit Angled 2.0mm	MSL20
Slit Angled 2.1mm	MSL21
Slit Angled 2.2mm	MSL22
Slit Angled 2.3mm	MSL23
Slit Angled 2.4mm	MSL24
Slit Angled 2.5mm	MSL25
Slit Angled 2.65mm	MSL26
Slit Angled 2.75mm	MSL27
Slit Angled 2.8mm	MSL28
Slit Angled 2.9mm	MSL29
Slit Angled 3.0mm	MSL30
Slit Angled 3.2mm	MSL32
Slit Angled 3.5mm	MSL35
Slit Straight 1.0mm	MSS10
Slit Straight 2.8mm	MSS28
Slit Straight 3.0mm	MSS30

Arched Knife

Angle = 45°

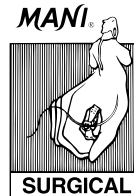
6pcs/box



MSL--AB

Product Name (Blade Width)	ORDER#
Slit Angled 1.8mm Arched (A 1.8mm W 1.7mm H 0.3mm)	MSL18AB
Slit Angled 2.0mm Arched (A 2.0mm W 1.85mm H 0.35mm)	MSL20AB
Slit Angled 2.2mm Arched (A 2.2mm W 2.05mm H 0.35mm)	MSL22AB
Slit Angled 2.5mm Arched (A 2.5mm W 2.4mm H 0.35mm)	MSL25AB
Slit Angled 2.65mm Arched (A 2.65mm W 2.5mm H 0.35mm)	MSL26AB
Slit Angled 2.8mm Arched (A 2.8mm W 2.6mm H 0.4mm)	MSL28AB
Slit Angled 3.0mm Arched (A 3.0mm W 2.8mm H 0.45mm)	MSL30AB
Slit Angled 3.2mm Arched (A 3.2mm W 3.0mm H 0.55mm)	MSL32AB
Slit Angled 3.4mm Arched (A 3.4mm W 3.2mm H 0.55mm)	MSL34AB

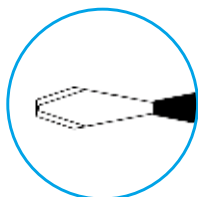
MANI® Ophthalmic Knife



R Slit Knife (Implant)

Angle = 45°

6pcs/box



MRS

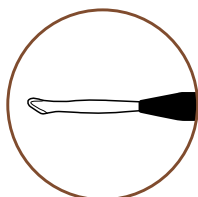


actual size

Product Name	ORDER#
R Slit Angled 2.6mm	MRS 2 6
R Slit Angled 3.2mm	MRS 3 2
R Slit Angled 3.5mm	MRS 3 5
R Slit Angled 3.75mm	MRS 3 7
R Slit Angled 4.1mm	MRS 4 1
R Slit Angled 5.2mm	MRS 5 2
R Slit Angled 5.5mm	MRS 5 5

Golf/Scleral Knife

6pcs/box



MGL



actual size

Product Name	ORDER#
Golf/Scleral 2.4mm	MGL 2 4

The crosslapped edge made of MANI's original hard fiber stainless steel produces the ultimate in sharpness.

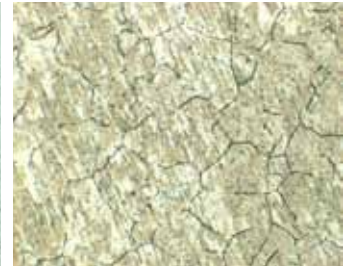
The details of "Ultimate in Sharpness"

Material

MANI's original hard fiber stainless steel (Austenite Stainless Steel) is a source of strength and which has ensured thin but strong edge. (Edge thickness of crescent knife MANI: 0.14mm Company A : 0.18mm)



Structure of MANI hard fiber stainless steel



Structure of other's stainless steel

Processing

MANI fine-processing technique has created the crosslapped edge, which provides excellent sharpness and consistent quality. (Crosslapped edge: polishing direction is vertical of the edge)



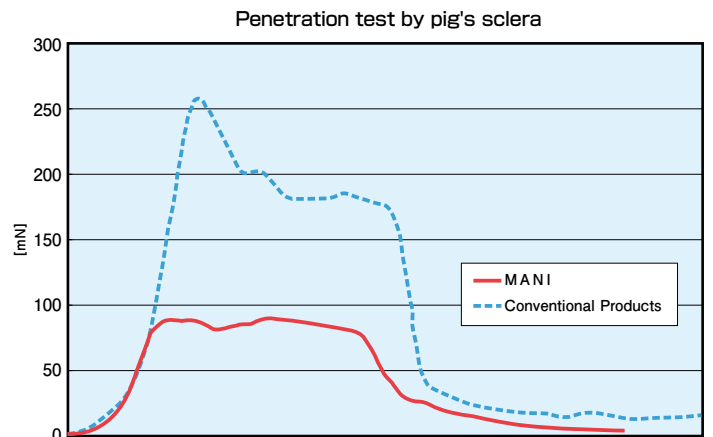
MANI crosslapped edge



Other's edge

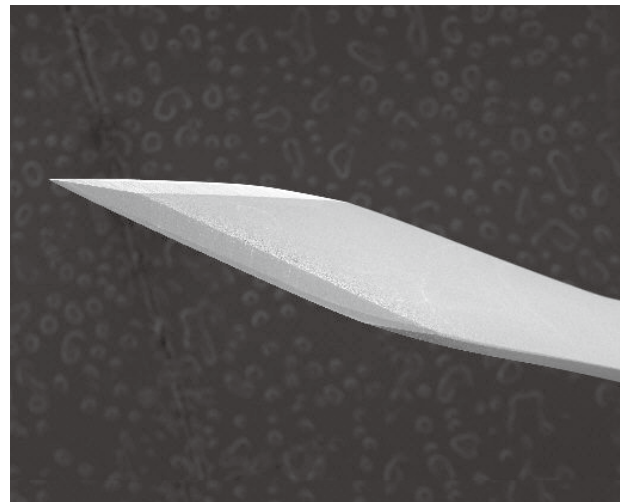
Sharpness

MANI has intensively focused on cutting quality in developing our ophthalmic knives. The edge created by the original processing techniques provides "Ultimate in Sharpness" and minimizes tissue damage.





—Wide Variety of Colors and Models—



—Micro Sharpening Technology—
(Enlarged photo of MANI Ophthalmic Knife)

Do you know this is another MANI?
MANI surgical needles occupy 70% and above of total production volume in Japan and 90% and above of export sales from Japan.
In addition, MANI files and reamers occupy 35% and above in the global market.

MANI wishes human good health and contributes to the medical treatment in the world. Instruments of MANI obtain deep trust at medical treatment sites more than 120 countries in the world for over 50 years.

**THE BEST QUALITY
IN THE WORLD,
TO THE WORLD.**

MANI Instruments are distributed to medical field through following channels.

- Excellent Medical wholesalers in Domestic & Foreign market.
- Excellent Export Trading Companies.

<http://www.mani.co.jp> E-mail:ophthalmic@ms.mani.co.jp



▲MANI TAKANEZAWA Factory



▲MANI KIYOHARA Factory

Distributed by



8-3 KIYOHARA INDUSTRIAL PARK, UTSUNOMIYA,
TOCHIGI, 321-3231, JAPAN
Phone:+81286677565 Fax:+81286676177

0 00611 (111203)